



MASFAA Fall Training 2024



GET2COLLEGE: WHO **WE ARE**



24-25 FAFSA Season

Recap

Summer 2024

NCAN "Do the FAFSA" Campaign

- WHEF Donated \$50,000 to the campaign. The social media campaign was designed to reach students where they are and give the tools to complete the FAFSA and get the funds they need and deserve.
- Online, the #DoTheFAFSA digital advertising campaign delivered 6,351,422 ad impressions in Mississippi, yielding 35,919 clicks to fafsa.gov.
- This was a strong Mississippi clickthrough rate of 0.57% compared to the national #DoTheFAFSA clickthrough rate of 0.44% and far exceeding the industry benchmark of 0.07%-0.15%.
- Using the U.S. Department of Education's overall click-to-FAFSA start ratio of 36% for summer 2024, the Mississippi fafsa.gov clicks resulted in an estimated 12,931 FAFSA starts.

Summer 2024

FAFSA Support Strategy

- The FAFSA Support Strategy was designed to help students and families complete the FAFSA over the summer.
- The FAFSA support strategy, announced by the US Dept of Education on May 6th and administered by ECMC, was designed to increase capacity of organizations providing personalized advising and communications support throughout the summer to close the FAFSA completion gap.
- On May 31st, the nation FAFSA completion rate for high school seniors was 43.3%, a 13.5% drop from this date in 2023.
- NCAN (National College Attainment Network) received \$1,498,000 to support this strategy to reach Pell Grant eligible students ages 17-20 encouraging them to #DoTheFAFSA from May-August 2024.

Summer 2024

FAFSA Support Strategy-WHEF's Contribution

- WHEF received \$379,000 to:
 - Design a comprehensive statewide informational campaign targeting students and families focused on: (1) debunking common myths surrounding FAFSA, (2) highlighting the importance of completing the FAFSA, (3) and providing guidance on how to complete it and where to seek support.
 - Increase the availability of individual student appointments at alternative times (evenings and weekends) that are currently not available due by hiring seasoned advisors on a short-term contract basis.
 - Test from their four Get2College centers in the community FAFSA completion events keeping in mind the unique needs of each of those graphic areas.

Summer 2024

FAFSA Support Strategy-WHEF's Contribution (cont.)

- WHEF received \$379,000 to:
 - Engage the faith-based community across the state, by building family awareness and support to complete the FAFSA.
 - Leverage Mississippi communities to support summer FAFSA completion with a general call-to-action to support community-driven FAFSA completion events. This call-to-action will subsidize the cost of staffing, volunteers, supplies and hosting.
 - To foster motivation for communities to host events, they will be adding a summer FAFSA competition for sites that host events to win monetary prizes to use for future FAFSA programming.
 - Develop a strategy to support real-time FAFSA troubleshooting for advisors and volunteers when they are having issues with completing the FAFSA, so they feel supported through this process too.

Summer 2024

Results of WHEF's Summer Completion Strategy

- Mississippi's summer 2024 FAFSA completion effort was very strong.
- In Mississippi, the FAFSA completion rates for the high school class of 2024 stood at 40.1% as of May 10.
- By August 30, the completion rate had risen to 59.9%, far exceeding the national rate of 51.4% and ranking Mississippi as fourth in high school senior FAFSA completions behind only Tennessee, Louisiana, and Delaware.
- In fact, Mississippi's summer FAFSA completion rate was the third highest in the country behind only New Mexico and Florida.

Context for NCAN Stats

**Historical FAFSA completion
between April & August:**

2021: 17% increase

2022: 22% increase

2023: 20% increase

2024: 34% increase



Freshman Enrollment & FAFSA Completion

The Good News:

Overall postsecondary enrollment grew for the second consecutive fall, building positive post-COVID-19 pandemic momentum.

The Bad News:

Fall semester freshman enrollment declined by 5% year-over-year, which was driven by a 6% enrollment decline for 18-year-olds.

National Student Clearinghouse Data First Comprehensive Look at Fall 2024 Enrollment

- Nationwide, enrollment grew by 3% compared to fall 2023, the second consecutive year of fall term enrollment growth.
- For 18-year-olds specifically, freshman enrollment declined by 6%. The National College Attainment Network (NCAN) commissioned the analysis of 18-year-olds' outcomes (versus 18-to-20-year-olds as a group) to better understand matriculation patterns for students directly from high schools.
- 19-to-20-year-old freshman enrollment dropped even more steeply, declining almost 9% this semester relative to last year.

National Student Clearinghouse Data First Comprehensive Look at Fall 2024 Enrollment

- Freshman enrollment (for students aged 24 and younger) declined across all income levels but particularly in the middle three quintiles' enrollments at four-year institutions. Freshman enrollment from the bottom and second-bottom quintiles of neighborhood income saw their enrollment decline by 4.6% and 7.6%, respectively.
- Four-year public institutions with high Pell Grant recipient enrollment percentages (36% or more) saw their fall semester freshman enrollment decline by 10.4%. Private non-profit four-year institutions saw a decline of 10.7%. Two-year institutions saw a modest year-over-year growth of 1.2%.
- White freshman enrollment declined most sharply year-over-year (-11.4%). Black and Latino/a students saw their freshman enrollment decline by 6.1% and 1.4%, respectively. Asian students saw their enrollment decline by 2.8%.

The connection between FAFSA completion and postsecondary enrollment for high school seniors has historically been strong, with the two figures moving in the same direction since at least the high school class of 2018. This chart's national first fall enrollment rate data comes from NCAN's analysis of the NSCRC's annual High School Benchmarks series.

| High School Class | National FAFSA Completion Rate | Year-Over-Year FAFSA % Change | National First Fall Enrollment Rate |
|-------------------|--------------------------------|-------------------------------|-------------------------------------|
| 2018 | 54.0% | +1.9% | 64% |
| 2019 | 53.8% | -0.5% | 62.9% |
| 2020 | 52.0% | -3.7% | 59.9% |
| 2021 | 49.9% | -4.8% | 58.8% |
| 2022 | 52.1% | +4.6% | 60.0% |
| 2023 | 53.4% | +1.3% | 60.2% |
| 2024 | 46.0% | -11.6% | ??? |

2024/2025 Pell Grant Status

- As of early September, approximately 500,000 more FAFSA applicants are eligible for Pell Grants than were at this time last year—a 6% increase.
- Schools have also originated more Pell Grants than in early September of the last cycle.
- While FAFSA submissions are still lagging among lower-income students—7% fewer applicants with incomes below \$48,000 had submitted applications as of late August than had done so last year—the gap is shrinking.
- Applications among those with incomes below \$30,000 have grown by 24% since early July compared to 15% among those with the highest incomes.

| Income | Percent Change |
|--------------------|----------------|
| \$0–\$30,000 | 24% |
| \$30,001–\$48,000 | 21% |
| \$48,001–\$75,000 | 20% |
| \$75,001–\$110,000 | 18% |
| \$110,001+ | 15% |

Increase in FAFSA submissions between early July 2024 and late August 2024

November 1, 2024

Nationally

- 53.4% of high school class of 2024 have completed a FAFSA
(2,224,789 completions)
- -8.8% change compared to last academic year

Mississippi

- 62.7% of the high school class of 2024 have completed a FAFSA
(20,060 completions)
- -12.2% change compared to last academic year
(-2,783 completions)

National College Attainment Network

State FAFSA Completion Ranking

as of November 1, 2024

| 1 | 2 | 3 | 4 | 5 |
|------------------|-------|-------|-------------------------|-------|
| PR | TN | MS | DE | LA |
| 82.6% | 63.6% | 62.7% | 62.7% | 62.7% |
| | | Rank | % of Seniors Completing | |
| Puerto Rico | | 1 | 82.6% | |
| Tennessee | | 2 | 63.6% | |
| Mississippi | | 3 | 62.7% | |
| Delaware | | 4 | 62.7% | |
| Louisiana | | 5 | 62.7% | |
| Washington, D.C. | | 6 | 61.1% | |
| Illinois | | 7 | 60.6% | |
| Texas | | 8 | 60.0% | |
| Connecticut | | 9 | 59.7% | |
| New Jersey | | 10 | 59.6% | |
| Rhode Island | | 11 | 58.8% | |
| New York | | 12 | 58.3% | |
| Georgia | | 13 | 58.0% | |
| California | | 14 | 57.5% | |
| South Carolina | | 15 | 56.1% | |
| Massachusetts | | 16 | 55.4% | |
| Kentucky | | 17 | 54.9% | |
| Alabama | | 18 | 54.8% | |
| Virginia | | 19 | 53.6% | |
| Ohio | | 20 | 53.5% | |

What US Dept. of Edu is Doing

- Hired Jeremy Singer as FAFSA Executive Advisor at FSA, President of College Board
- Hosted a series of listening sessions during the summer 2024 on how to better support students, families, colleges, states, and partners.
- Of FSA's listening tour, Singer said, the message was clear: there was a need for predictable deadlines, reliable software, and transparent communications.
- Published a Request for Information (RFI) to solicit feedback from those unable to attend the listening sessions



Open FAFSA Issues

Check FSA Knowledge Center for an Open Issue Alerts

- **Open Issues as of 11/14/24**
 - 10 open issues for the FAFSA form (9 have a workaround for the issue)
 - 1 open issues for the FAFSA Submission Summary (Workaround)
 - 9 open issues for FAFSA Corrections (7 have a workaround for the issue)
 - 1 open issues for Other FAFSA Issues (Workaround)

Early Education Review



FAFSA

Free Application for Federal Student Aid

- It is only an application- the colleges award the \$
- Types of Federal Student Aid:
 - Pell Grant (\$7,395/year for 24-25)
 - Work-Study
 - FSEOG (grant)
 - Direct Loans
- Some colleges or private scholarships may require the FAFSA as a part of eligibility
- Student Aid Index (SAI) is the unit that is used to determine if the student has “financial need”
- Uses 2023 tax information



What We Know

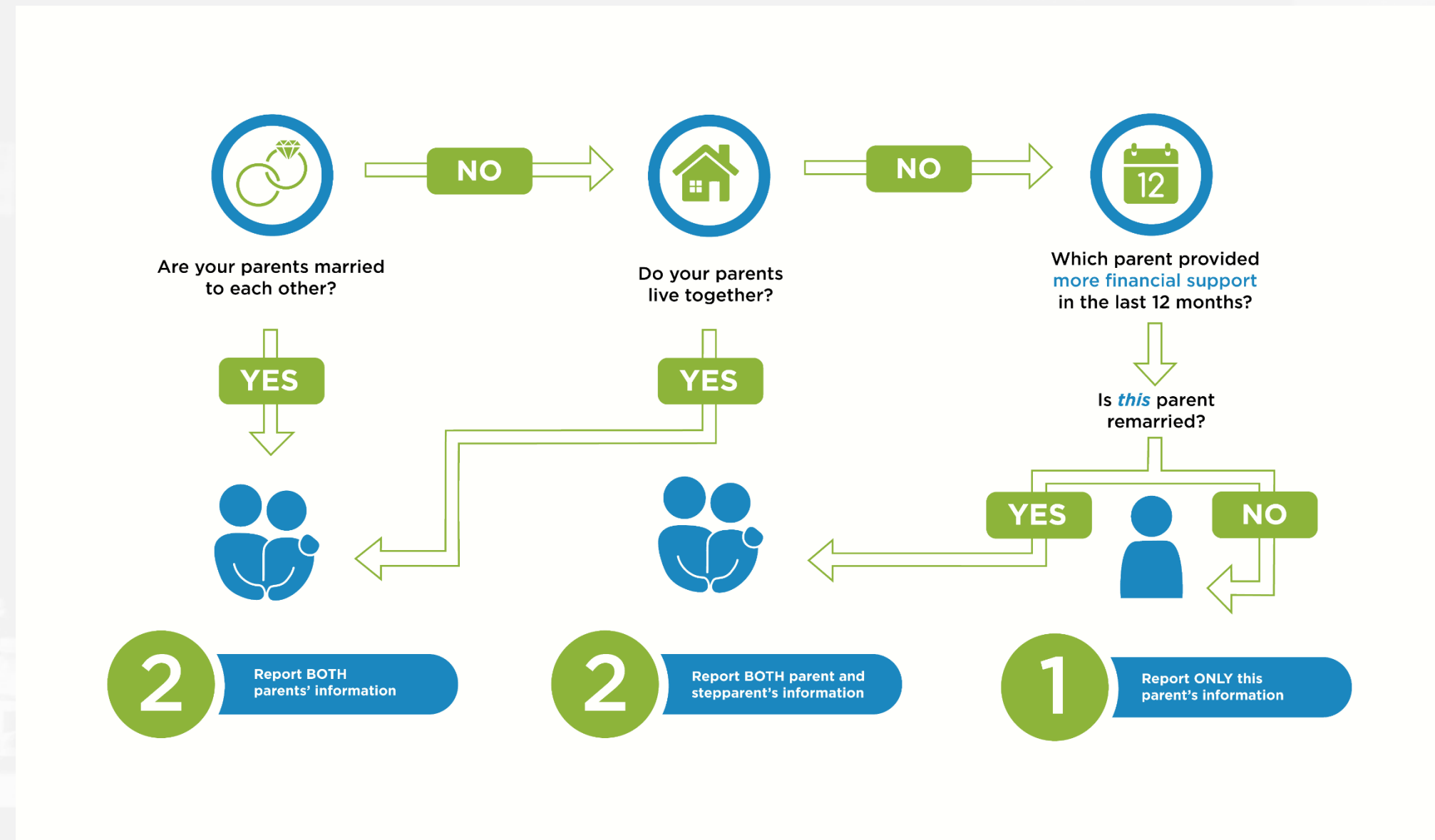
25-26 FAFSA

Contributors

- FAFSA is a “role-based” experience
- Possible contributor roles:

Student
Parent
Parent Spouse
Student Spouse

- The FAFSA is not complete until all contributors submit their sections
- Who counts as a Parent on the FAFSA form Tool available on the website to assist students in determining who is their contributors



Who is My Parent for the FAFSA Tool

- New web page on studentaid.gov
- Interactive flow chart tool to guide students on determining who should be invited as a contributor to their FAFSA
- Make sure students read all the bullets on the page for more details
- <https://studentaid.gov/fafsa-apply/parents>

Who counts as a parent on the FAFSA® form?

A student may need to ask their parent(s) to provide information on their FAFSA form based on the student's **dependency status**.

This tool helps determine which parent(s) should participate in a student's **FAFSA form**.



↶ Start Over

The Student's Legal Parent(s):



Example 1



Example 2

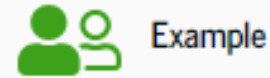
Are Example 1 and Example 2 married to each other (not separated)?

☐ Yes

☐ No

[↶ Start Over](#)

The Student's Legal Parent(s):



Are Example and Example married to each other (not separated)?

☐ Yes

☒ No

Do Example and Example live together?

☐ Yes

☒ No

Which parent has provided more financial support for the student over the past 12 months?

If both parents provided an exact equal amount of financial support or if neither supports the student financially, select the parent with the greater income and assets.

☐ Example

☒ Example

Did Example remarry?

☒ Yes

☐ No

The Student's FAFSA® Parents



Example is a parent on the FAFSA® form.



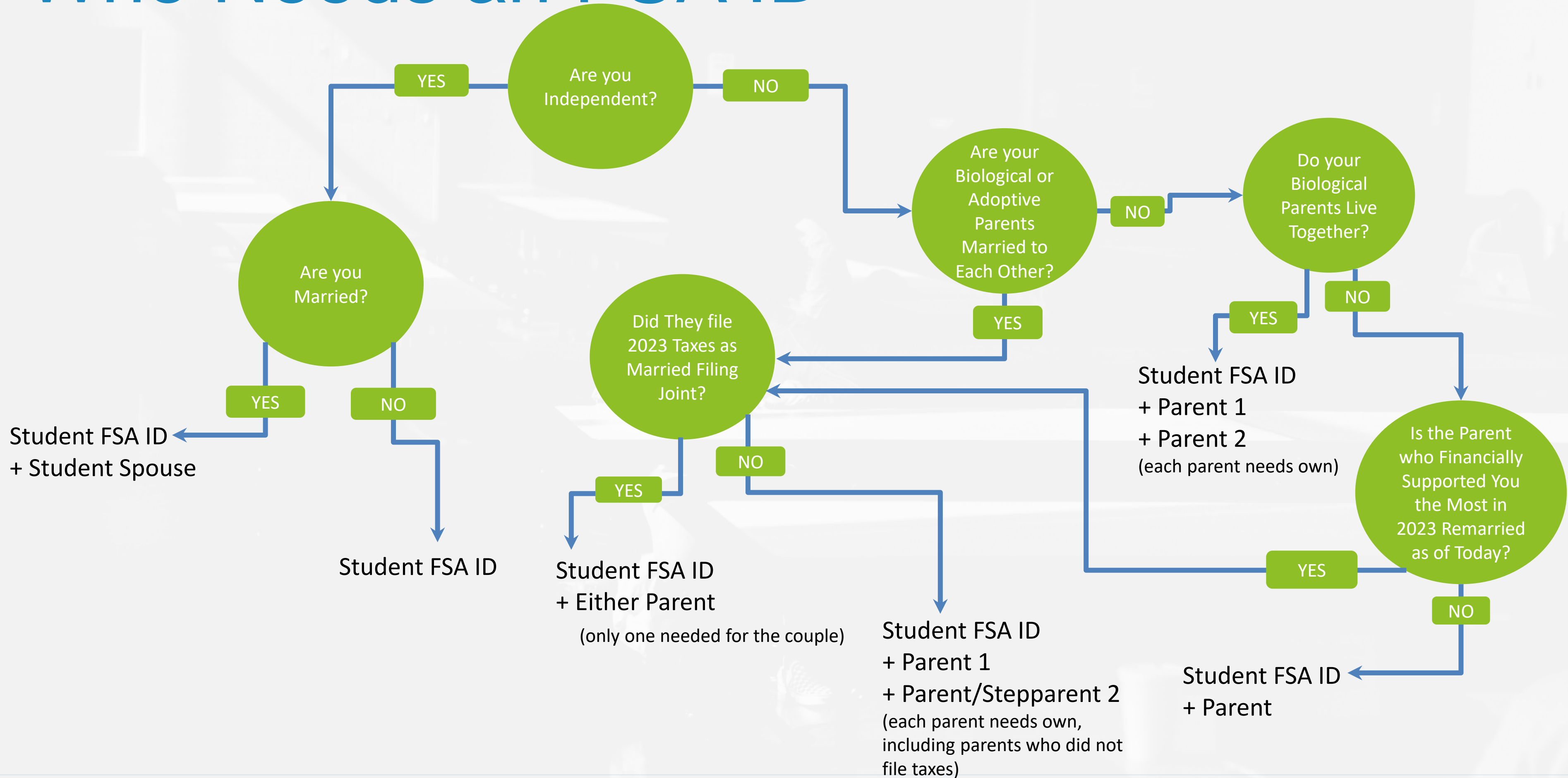
Example's spouse's information is needed on the FAFSA® form.

- The student will need to invite only Example to the FAFSA form.
- Example should report their current marital status as married or remarried.
- If Example filed taxes jointly with their spouse, only Example is required as a contributor. Example will report their own information and their spouse's information.
- If Example and their spouse did not file taxes jointly, then both the parent and spouse are contributors on the FAFSA form. Example will be prompted to invite their spouse. Example's and their spouse's individual information, consent and approval, and signatures will be required.
- Example (and their spouse if identified as a contributor) needs their own FSA ID (account username and password) to fill out their portion of the student's FAFSA form.

[Information Needed for an Invitation](#) ▾

[Can a parent start a FAFSA form for the student?](#) ▾

Who Needs an FSA ID



FSA IDs for Parents without SSNs

- New process for parents without Social Security Numbers to create an FSA ID to contribute to their student's FAFSA.
- Eliminated: signature page mailed in for undocumented parents
- Warning: Undocumented students still not eligible for Federal Student Aid, this process is ONLY for parents of an eligible non-citizen or U.S. citizen student

FSA IDs for Parents without SSNs

Federal Student Aid
AN OFFICE OF THE U.S. DEPARTMENT OF EDUCATION

FAFSA® Form ▾ Loans and Grants ▾ Loan Repayment ▾ Loan Forgiveness ▾ Log In | Create Account 🔍

Create an Account

Step 1 of 7

Personal Information

I understand that I'll be required to certify that the information I provide to create an account is true and correct and that I'm the individual I claim to be.

If I'm not the person I claim to be, I understand that I'm not authorized to proceed and that I should exit this form now. If I provide false or misleading information, I understand that I might be subject to a fine, prison time, or both.

First Name

Middle Initial

Last Name

Date of Birth

Month Day Year

Social Security Number

What if I don't have a Social Security number? ▾

Cancel Continue

FSA IDs for Parents without SSNs

An official website of the United States government.

Help Center Submit a Complaint English Español

Federal Student Aid
An OFFICE of the U.S. DEPARTMENT of EDUCATION

FAFSA® Form ▾ Loans and Grants ▾ Loan Repayment ▾ Loan Forgiveness ▾

Log In | Create Account 🔍

Create an Account

Step 7 of 7

Identity Verification

One last step! We're required to ask additional questions when you don't have a Social Security number (SSN) to verify your identity. You must answer these to finish creating your account.

The results of the identity verification will be displayed on the next page—note that you won't be able to return to this page to answer these questions again.

Which of the following is the street name of your most recent previous address?

☐ Florida Ave NW

☐ Sesame Street

☐ Langston Pkwy

☐ None of the above

Which of these phone numbers have you ever used previously?

☐ (316) 775-5152

☐ (970) 680-6986

☐ (128) 791-0911

☐ None of the above

Which of the following is a current or previous employer?

☐ Adidas

Which of the following is a current or previous employer?

- ☐ Adidas
- ☐ The Walt Disney Company
- ☐ Nokia
- ☐ None of the above

Which of the following people lives or owns property in Tafuna?

- ☐ Aasiya Jayavant
- ☐ Leo Knight
- ☐ Justine Marshall
- ☐ None of the above

FSA IDs for Parents without SSNs

An official website of the United States government. Help Center Submit a Complaint English Español

Federal Student Aid AN OFFICE OF THE U.S. DEPARTMENT OF EDUCATION FAFSA® Form ▾ Loans and Grants ▾ Loan Repayment ▾ Loan Forgiveness ▾ Log In | Create Account 🔍

Your Account Was Successfully Created

What's Next?

✔ Your Identity Has Been Verified!

You can log in and start filling out the FAFSA® form.

💡 Remember to Save Your Backup Code

Your backup code lets you access your account in the event that you cannot use any other two-step verification method.

Your Backup Code Is:

RJY47DN2J6DF

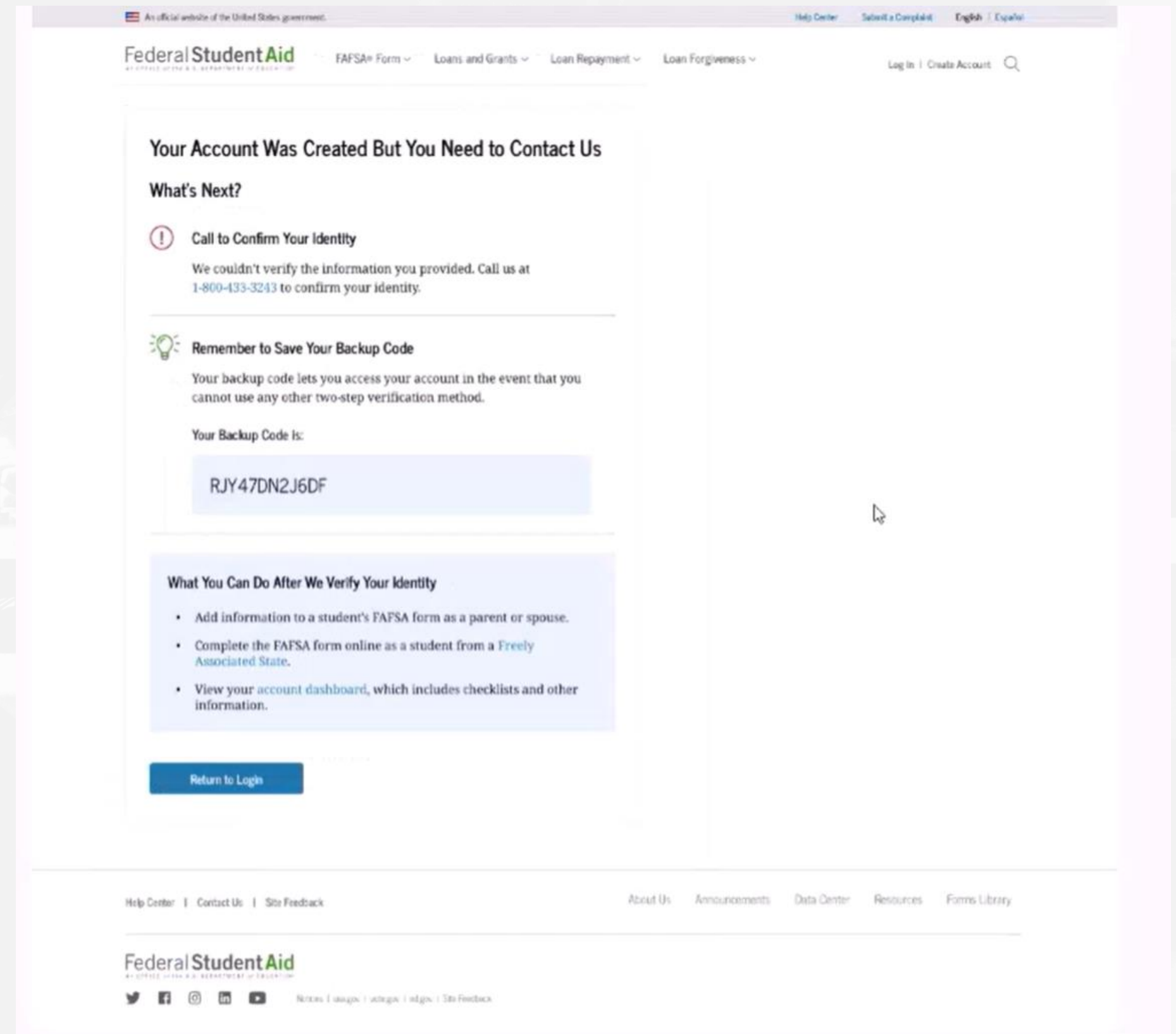
What You Can Do Now

- Add information to a student's FAFSA form as a parent or spouse.
- Complete the FAFSA form online as a student from a [Freely Associated State](#).
- View your [account dashboard](#), which includes checklists and other information.

[Return to Login](#)

FSA IDs for Parents without SSNs

IF NOT IMMEDIATELY
VERIFIED BECAUSE CAN
NOT COMPLETE
KNOWLEDGE-BASED
IDENTITY QUESTIONS
CORRECTLY:



The screenshot shows the Federal Student Aid website interface. At the top, there is a navigation bar with links for 'Help Center', 'Submit a Complaint', 'English', and 'Español'. Below this, the 'Federal Student Aid' logo is displayed, followed by links for 'FAFSA Form', 'Loans and Grants', 'Loan Repayment', and 'Loan Forgiveness'. A 'Log In / Create Account' link is also present.

The main content area features a heading: 'Your Account Was Created But You Need to Contact Us'. Below this, a section titled 'What's Next?' contains two items:

- Call to Confirm Your Identity**: A message stating, 'We couldn't verify the information you provided. Call us at 1-800-433-3243 to confirm your identity.'
- Remember to Save Your Backup Code**: A message stating, 'Your backup code lets you access your account in the event that you cannot use any other two-step verification method.'

Below these items, a box displays the 'Your Backup Code is: RJY47DN2J6DF'.

A section titled 'What You Can Do After We Verify Your Identity' lists three actions:

- Add information to a student's FAFSA form as a parent or spouse.
- Complete the FAFSA form online as a student from a [Freely Associated State](#).
- View your [account dashboard](#), which includes checklists and other information.

A 'Return to Login' button is located at the bottom of the main content area.

The footer contains links for 'Help Center', 'Contact Us', and 'Site Feedback'. It also includes the 'Federal Student Aid' logo, social media icons for Twitter, Facebook, Instagram, LinkedIn, and YouTube, and a link to 'Site Feedback'.

FSA IDs for Parents without SSNs

IF NOT IMMEDIATELY
VERIFIED BECAUSE CAN
NOT COMPLETE
KNOWLEDGE-BASED
IDENTITY QUESTIONS
CORRECTLY:

ID VERIFICATION FOR INDIVIDUALS WITHOUT SSN'S - PROCESS

FederalStudentAid
AN OFFICE OF THE U.S. DEPARTMENT OF EDUCATION

- Contact FSAIC at 1-800-433-3243
- A Customer Service Representative will look up your account and initiate the identity verification process
- You will receive an email with a case number and instructions for providing the proper documentation for us to verify your identity
- Submit the required documentation
- Within 1-3 days FSA will provide an email confirming that your identity has been verified

ID VERIFICATION FOR INDIVIDUALS WITHOUT SSN'S – REQUIRED DOCUMENTS

FederalStudentAid
AN OFFICE OF THE U.S. DEPARTMENT OF EDUCATION

- Completed Attestation Form
 - Will be available on StudentAid.gov
 - Proof of Identity:
 - ONE of the following forms of ID
 - Driver's License
 - State or City Identification Card
 - Foreign Passport
- OR
- A UTILITY BILL + ONE of the following forms of ID
 - Municipal identification card
 - Community ID
 - Consular identification card

Parent without SSNs Update

- The Manual Identity Verification Process has been temporarily suspended for the 25-26 FAFSA Cycle.
- This will allow those without an SSN to immediately access the online 25-26 form after creating a StudentAid.gov account, foregoing the need to have the identity validation process completed prior to a student submitting their FAFSA form.
- It is encouraged that those without immediate verification continue and complete the identity validation process as soon as possible to avoid future delays.

Interpretation Improvements

- Students and Contributors can go to the updated interpretation support page for written “Get Started” content.
- The written “Get Started” content is available in Mandarin, Cantonese, Tagalog, Vietnamese, French, Korean, German, Arabic, Russian, and Haitian Creole.
- While the written “Get Started” content is only in those 10 languages (plus Spanish and English), speakers of +60 other languages can call 833-610-2590 for verbal support. Press “7” to reach an agent. After reaching an agent, say “Interpreter” followed by the name of the requested language.

| | |
|----------------------|----------------------|
| Albanian | Malayalam |
| Amharic | Malinke |
| Arabic | Mandarin |
| Armenian | Mongolian |
| Assyrian | Neapolitan |
| Bengali | Nepali |
| Berber | Oromo (Ethiopia) |
| Bosnian | Pashto (Afghanistan) |
| Brazilian Portuguese | Polish |
| Bulgarian | Portuguese |
| Burmese | Punjabi |
| Cambodian | Romanian |
| Cantonese | Russian |
| Cape Verdean | Sinhala |
| Chin (Falam) | Somali |
| Chin (Hakha) | Swahili |
| Dari (Afghanistan) | Tagalog |
| Dinka (Sudan) | Tamil |
| Farsi (Persian) | Telugu |
| Filipino | Thai |
| French | Tigrigna (Eritrea) |
| French Creole | Turkish |
| Fulani | Twi |
| German | Ukrainian |

What We Know

25-26 FAFSA

FSA ID

- Still need to be created at least 3 days before starting the FAFSA
- Make these early for easier access when form opens
- All contributors need an FSA ID
 - Parents without SSN currently have a manual identity verification with immediate access to online FAFSA (*currently a temporarily suspended requirement*)

25-26 Looking **Forward**



FSA IDs By County

November 4th Report

- 21% of Mississippi 12th graders ready with FSA IDs
- 35.1% of 12th graders ready with FSA IDs now compared to total FSA IDs created by peer group last year
- 48 counties have at least 15% of their high school seniors with an FSA ID
- 6 counties have zero
- Top 25 counties

| County | % of Seniors with an FSA ID |
|---------------------|-----------------------------|
| Jasper County | 60.0% |
| Smith County | 58.8% |
| Franklin County | 54.5% |
| Calhoun County | 52.9% |
| Jones County | 48.0% |
| Yalobusha County | 46.7% |
| Benton County | 44.4% |
| Hancock County | 43.1% |
| Quitman County | 42.9% |
| Grenada County | 41.4% |
| Chickasaw County | 40.9% |
| Wayne County | 40.7% |
| Perry County | 40.0% |
| Holmes County | 37.0% |
| Greene County | 35.7% |
| Harrison County | 34.6% |
| Covington County | 33.3% |
| Humphreys County | 33.3% |
| Tallahatchie County | 30.8% |
| Tunica County | 30.8% |
| Panola County | 27.9% |
| Lauderdale County | 27.6% |
| Pearl River County | 26.8% |
| Jackson County | 25.9% |
| Marshall County | 24.4% |

25-26 Beta Testing

Nationally

As of November 13, 2024

- **Participating students:** 17,260
- **Participating contributors:** 9,935
- **Participating organizations (through Beta 3):** 57
- **Participating IHEs:** 2,080
- **Forms submitted:** 12,920
- **ISIRs delivered:** 81,270

In Mississippi

- 3 organizations: Millsaps (Beta 2), JSU (Beta 3), Get2College (Beta 3)
 - Over 60 high school seniors submitted during Get2College Beta test 4 days

25-26 Roadmap

Federal Student Aid

August- December 2024

2025-26 FAFSA Specification Guide rolled out publication

Fall 2024-Winter 2025

Financial Aid Administrator Training
Outreach Resources for counselors and advocacy groups

September 2024

25-26 FAFSA Prototype
Sample ISIR Datasets for Testing
Final ISIR Layout

October 2024

Standalone Parent Wizard Tool
Federal Student Aid Estimator
FAFSA Beta Testing

November 2024

25-26 FAFSA Preview Presentation
FAFSA Beta Testing

December 2024

25-26 FAFSA form available
FSA Training Conference

25-26 Updated Resources

Federal Student Aid

- 25-26 FAFSA Prototype
- Standalone Parent Wizard Tool
- Federal Student Aid Estimator
- 25-26 FAFSA Preview Presentation
- Updated FSA ID Resources

Get2College

- Who is Contributor Graphic
- Who needs an FSA ID Graphic
- Updated list of 25-26 FAFSA material needed
- High School Hosting FAFSA Day resource guide
- Financial Aid Datasheet

Changes

25-26 FAFSA

Form Changes


- Will be the same format
- Only slight changes to wording and help text (no public comment period this year)
- Housing plan questions will NOT return
- Unsubsidized Direct Loan question will change: default to “no” as answer and if changed to “yes” pop-up confirming this change to not receive Pell Grant
- After CONSENT page now has a screen showing a transfer bar & confirmation if FTI occurred
- (i) more information on questions and location of information will return

Technical Functionalities

- 25-26 user testing is being done through Beta Testing
- Limited work on functionality fixes for 25-26 yet, still working on 24-25 issues
- Testing if the new technology platform can run two FAFSA simultaneously
- Renewal forms will not auto-populate, it is the same user experience as a new form

New IRS Import Screen

FAFSA[®] FORM 2025–26 Student Jenny Price Save FAFSA Menu




We're securely importing your information.

Do not leave this page while your information is being imported into your application.


Loading...

New IRS Import Screen

FAFSA[®] FORM 2025–26 Student Jenny Price Save FAFSA Menu



We're securely importing your information.

**Data Not Received**

We were unable to retrieve your financial information, so you may have to enter it yourself in the Finances section. Select "Continue" to proceed.

PreviousContinue



@Get2college

training@get2college.org